

·
()

I.

·
·
,
,
· ,
·
가
·
(, 2003).
,
가
·
가

II.

가
(가
, 2005).
가
2005 6 24
1960 1970
가

(Marshall, 2007).

가 , 가

1)

2)

(Jefferson and Trainor, 1996).

가 가

(Goddard and Pye, 1977).

가 (Richardson and Gillespie, 2003).

가

1)

(Goddard, 1975).

2)

가 가

가 . 2003
(Lyons, 2004).



가

가

(Experian, 2004).

가

가

가

가

(Marshall, 1996).

³⁾

가

3)

가

(Jefferson and Trainor, 1996, p.41).

가 (Yliskyla- 가
Peuralahti, J, 2003).

가 ,

(Lyons, 2004).

가

III.

1.

(cluster) 가

가

(, 2005). 30

(outsourcing) 11.8% 2004

11.8%

47.6% 2,324

1

가

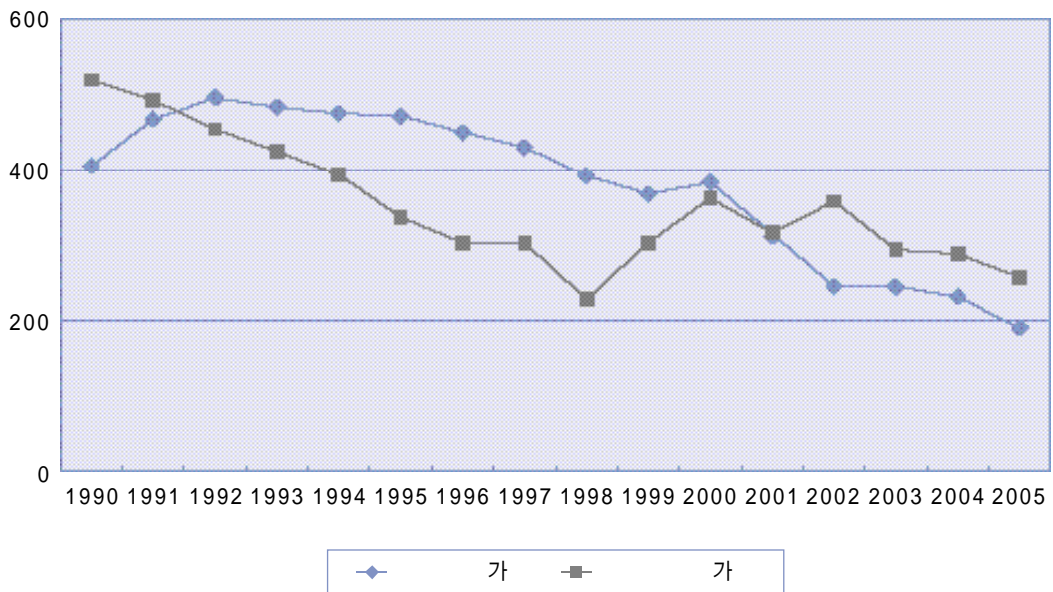
:

	1990	1991	1992	1993	1994	1995	1996	1997	1998	1999	2000	2001	2002	2003	2004	2005
가(A)	410	469	496	483	480	473	450	430	395	370	389	314	248	248	230	193
가(B)	520	496	455	427	396	335	304	301	229	303	369	318	363	294	290	258
가	244	275	285	275	274	266	250	238	220	208	218	182	154	157	150	129
가	276	221	169	152	122	69	54	62	9	95	150	136	210	137	140	129
(B/A)	126.9	105.8	91.6	88.3	82.5	70.9	67.4	69.9	58.0	81.8	94.7	101.0	146.4	118.6	125.9	133.8

: (1990 ~ 2005), (1990 ~ 2005).

1

가

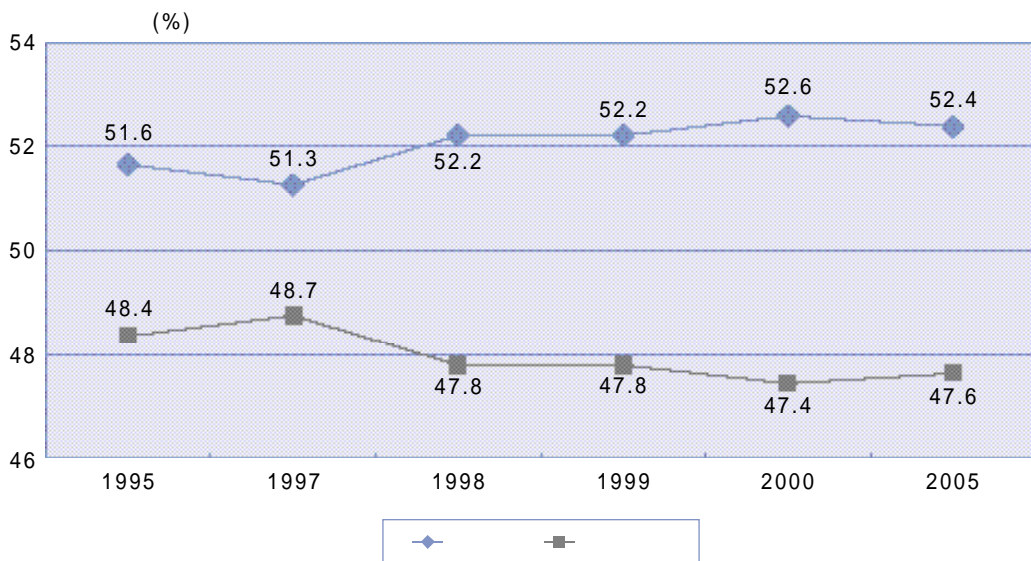


2010 50% , 가 2000
 2030 53.9% 가
 .
 .⁴⁾ < 2>
 가
 가

가 1990 가
 , 가
 .
 .⁵⁾
 가

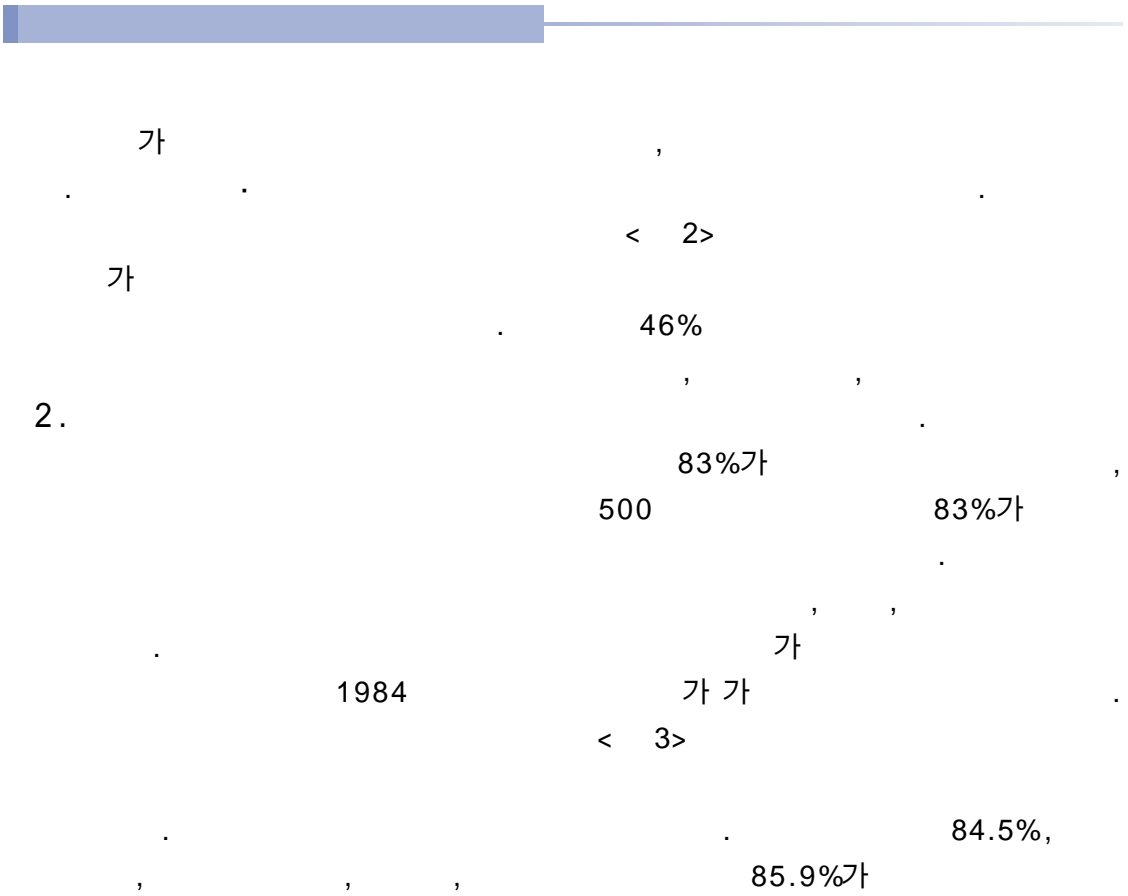
2

(1995 ~ 2005)



4) , , 2005. 4.

5) 1980 가 , 1990 ~ 95 가 0.9
 가 1.2 .



2

			46.0%
			46.6%
	(政)		100.0%
			83.2%
	(産)	100	91.0%
		500	82.6%
		3,000	71.9%
	(學)	20	65.0%

: , 「 , 2002.

		50	8	58	86.2
		109	25	134	81.3
		159	33	192	82.8
		23	3	26	88.5
		14	1	15	93.3
		80	24	104	76.9
		70	3	73	95.9
		187	31	218	85.8
		346	64	410	84.4

: 1)

2) 1 .

3) ()

4) 가

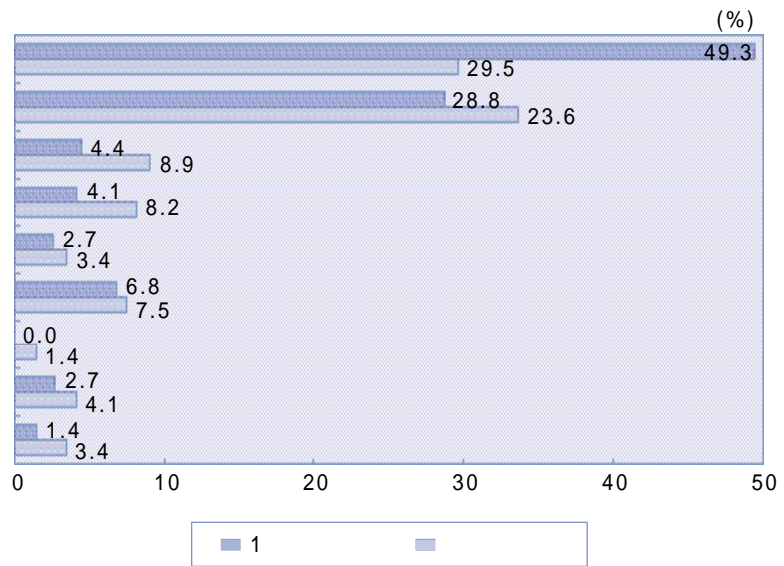
5)

. ” 2 (, 2003).

가 가 가 가 . 가

가 13가 가 “ 가 (< 3>).

가



가

가 가

IV.

1.

가

14

1964 가 1980 2

1970

14

1985 3

가

1971 「 1 , 1990 9

(1972~81)」 가⁶⁾

3

, 1972 , 1,

2

가

3

가

1973 가 3

「 46 76 가

53 ,

23

6) 1973~92 19 , 2005 5 9 ,

5 255 2 2,395

	(`64.9)	- (,)
	(`69.12)	-
	(`70.4)	- ,
1	(`72 ~ `81)	- 가
	(`72.9)	- 2 , , ,
	(`73.3)	- 15 가 , 20
	(`75.5)	- .
	(`77.7)	-
	(`80.3)	- 5 , , ,
	(`85.11)	- , 10
3	(`92 ~ `01)	-
7 5	(`92 ~ `96)	- 가
5	(`93 ~ `97)	- 가
2	(`97)	- , ,

1 (1973)	.	18	6	-	24
	.	5	6	11	22
		23	12	11	46
2 (1980)	.	6	5	2	13
	.	1	-	-	1
		7	5	2	14
3 (1985, 1990)		-	16	-	16
	.	24	27	2	53
	.	6	6	11	23
		30	33	13	76

30
(廳)
(3) 33 , 13
.
76 59
1 ,
78%
53
, 2 38 ,
. 23 가 21
. 3
가
가 ,
가

1 (1973)	.	15	3	-	18
	.	8	3	10	21
		23	6	10	39
2 (1980)	.	2	6	1	9
	.	1	-	-	1
		2	6	1	9
3 (1985, 1990)		-	11	-	11
	.	17	20	1	38
	.	8	3	10	21
		25	23	11	59

: 2

1997

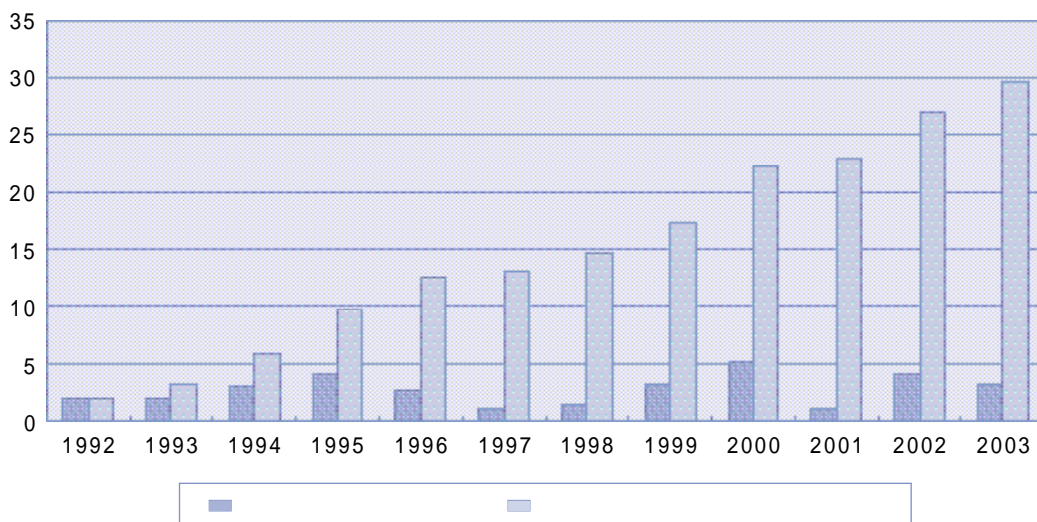
가 . ,
 (1975 10),
 (1982 12),
 (1982 12)

가 .

가 ,

가 가 . 1960 1990
 2 3,000 . (1
). 1990 (Cresson)
 가
 , ,
 (2). 1991 2004 6
 3 2,000
 , 3,000
 . 가 3 5,000
 . 2 10
 가 (1991 ~ 2004) 가 1 30
 (1960 ~ 90)
 가 .
 가

4





가
()
가
1960
1991

7

	(1963 ~ 72)	(1965 ~ 72)	(1973 ~ 88) ¹⁾	(1989 ~ 93)	(1989 ~ 93)	(1993)
South East	6,222	2,782	-	-	-	-
East Anglia	1,192	-	780	295	11	640
South West	692	640	420	925	786	3,892
West Midlands	279	-	290	607	1,666	108
East Midlands	211	535	-	1,280	133	900
Yorkshire & Humberside	783	-	2,337	2,793	13	1,027
North West	4,176	1,821	3,145	2,847	740	2,492
North	3,112	265	470	1,935	141	-
Wales	1,174	1,652	818	1,782	11	-
Scotland	4,684	1,797	2,092	994	767	60
Northern Ireland	-	-	20	515	650	-
	-	-	1,264	6	45	6
	22,525	9,472	11,636	13,979	4,963	6,882

: 1) 가
2) 139



1993 1 4,000
가 40
6 9,000
1976
18 1,000
가 2002 8 7,000
2010
2
가 7)
1988 1
(1988. 6)」
가 1989 76
11
1963 1972 2
2,500 2005 3
1973 (Hardman) 68 61 (1
가 4,000), 11 가
8 6,000 3 , 17 (6,300)
1,400 , 1988 2000 12
1 , 1989

7) 1999
2006 2,833

가 가 ,

17 . 가 가

, 4 가

,

,

.

.

.

.

가 2003

,

.

,

,

1 300 25 (county)

53

,

,

,

.

1960

.

()

,

52

1 1,000

.

가 5 16

.

, 가

		(km)		()
1970 (1971 1 ; 1973 2) 1 1,000		190		700
				100
		200		200
		350		400
				100
		200		500
		150		900
				100
		300		200
				200
		320		200
		250		200
				300
		180		300
		600		100
		140		400
		340		500
				300
		500		200
		60		300
				200
		160		800
		460		100
1980 540		500	(1986)	150
		200	(1998)	100
		340	(2001)	100
		1,000	(2002)	140
		150		50
: , 1997 ; (2003 5)				

()	County	
Agriculture & Food	Carlow 100, Cork 70, Laois 400, Wexford 85	655
Arts, Sport & Tourism	Cork 200, Kerry 165, Kilkenny 45	410
Communications, Marine & Natural Resources	Cavan 425, Cork 150, Leitrim 40	615
Community, Rural & Gaeltacht Affairs	Donegal 30, Galway 50, Mayo 140	220
Defense	Kildare 500	500
Education & Science	Laois 70, Offaly 75, Westmeath 445	590
Enterprise, Trade & Employment	Carlow 250, Clare 300, Kilkenny 110, Offaly 250, Wicklow 140	1,050
Environment, Heritage & Local Government	Kilkenny 60, Waterford 200, Wexford 445	715
Finance	Cork 200, Offaly 130, Waterford 300	630
Foreign Affairs	Limerick 130	130
Justice, Equality & Law Reform	Laois 40, Longford 130, Meath 100, Roscommon 230, Tipperary 480	980
Office of Public Works	Cork 100, Mayo 150, Meath 275	525
Revenue Commissioners	Clare 50, Kerry 50, Kildare 250, Limerick 50	400
Social & Family Affairs	Donegal 350, Leitrim 225, Louth 300, Monaghan 110, Sligo 100	1,085
Transport	Clare 100, Cork 200, Galway 160	460
(Environment, Finance, Health, Social & Family Affairs, Revenue Commissioners)		1,335
		10,300

1960 가
 1 3
 3,000 , .

•

84

V.

2005 6 24

176

410
346

, 가

(< 13>).

1.

가

가

12

410	346					
		175	67 ¹⁾	26	53	29

: 1) 13 , 22 , 32 .

가 .

13

	(1 1 ~ 6) ¹⁵	- - - - - , , , , , -
	(가), () ¹⁵ 1 7)	- - 가 - . - 가 - -
		-
	(가)	- - 가 - - 가

		<div><div></div><div></div><div>2</div><div></div></div>
	가	<div><div></div><div></div><div>(R&D)</div></div>
		<div><div></div></div>
		<div><div></div><div></div><div></div></div>
		<div><div></div><div></div><div></div></div>
		<div><div></div><div></div></div>
		<div><div></div><div></div><div></div></div>
		<div><div></div><div></div><div></div></div>
		<div><div></div><div></div><div></div></div>
		<div><div></div><div></div><div>()</div></div>
		<div><div></div><div></div></div>

< 14> 가
(道) 3.

가

가 (, 2005).

가

•

•

•

2

8)

—

2

2

1

가

가

1

가

3

2

가

,

1

가

VI.

1

1

■

()

가 ,

가

가
가

가

가



가
가





- (2003), 「
」
- (2005), “ : , 「
」(11 1), pp. 71-82.
- (2004), “ ”, 「 14, 2-10.
- (2002), 「
」 :
.
- (1997), 「 -
」 : .
- (2003), “ ”, 「 19(2),
187 ~ 208.
- (2003), “ : ”, 「
14(1).
- CITEP, “ 7. Evaluation de la politique de transferts des emplois publics, ”
(<http://wwwcitep.gouvfr>).
- DATAR, “ CIADT du 9 juillet 2001 à Limoges : 3. L ’implantation des publics, ”
2001(<http://wwwdatar.gouvfr/>)
- DATAR, “ Delocalisations: adaption du plan social d ’accompagnement, ”
LETTRE, no.137 (Mars 1992) : 4 ~ 7.
- Fouche', A., De'localisations Administratives et Développement Local, Conseil
economique et social, 1997.
- Jefferson, C. W. & Trainor, M(1996), “ Public sector relocation and regional
development,” Urban Studies, 33(1), 36-48.

-
- Montricher, N. & Thoenig, J.(1993), *De'localisations des Emplois Publics*, DATAR.
 - Experian Business Strategies(2004), *The Impact of Relocation: A Report for the Independent Review of Public Sector Relocation*.
 - Goddard, J. B.(1975), *Office location in urban and regional development*. London: Oxford University Press.
 - Lyons, M.(2004), *Well placed to Deliver? Shaping the Pattern of Government Service*, London: HMSO.
 - Marshall, J.N., Aderman, N. and Thawaites, A.T.(1991), "Civil Service relocation and the English regions", *Regional Studies*, 25, 499-510.
 - Marshall, J.N. et al(2005), *Relocation, relocation, relocation: Assessing the case for public sector dispersal*, *Regional Studies*, 39, 767-787.
 - Marshall, J.N.(2007), *Public sector relocation policies in the UK and Ireland*, *European Planning Studies* 15(5), 645-666.
 - Yliskyla-Peuralahti, J.(2003), "Relocation of government activities as a regional policy measure". paper presented at The 43rd European Congress of the Regional Science Association, Jyväskylä, Finland, August 27-30.